

The diagram shows a rectangular floor with a total width of 77 ft and a total height of 75 ft. The width is divided into three segments: 2 ft, 60 ft, and 15 ft. The height is divided into two segments: 60 ft and 15 ft. A shaded triangular area is located in the top-left corner, with its base along the top edge (60 ft) and its height along the left edge (15 ft). The triangle is formed by the top-left corner and a point on the bottom edge, 60 ft from the left side.

Technical drawing of a rectangular table. The drawing shows the top surface and the four legs. The dimensions are as follows:

- Overall length: 2.25
- Length of the top surface: 2.20
- Overall width: 77.5
- Width of the top surface: 75
- Thickness of the top surface: 2.5

Technical drawing of a table with dimensions:

- Top surface width: 1,65
- Top surface depth: 25
- Table top width: 1,60
- Table top depth: 25
- Table leg height: 75
- Table leg width: 77

Technical drawing of a rectangular table. The drawing shows a top-down view of the table with a light-colored top and a darker-colored base. The dimensions are indicated by dimension lines and arrows. The length of the table is 2,25, and the width is 2,20. The height of the table is 47,5, and the depth of the base is 50. The drawing is labeled with '2,25' and '2,20' for the length and width, and '47,5' and '50' for the height and base depth. The drawing is also labeled with '2,25' and '2,20' for the length and width, and '47,5' and '50' for the height and base depth.

A diagram of a rectangular frame. The top horizontal edge is labeled with '60' in the center and '2' at each end. The bottom horizontal edge is labeled with '56' in the center. The left vertical edge is labeled with '2' at the top. The right vertical edge is labeled with '2' at the top. The frame is filled with a light gray color.

Technical drawing of a rectangular plate. The top dimension line shows a total width of 80, with a segment of 76 marked between two vertical lines. The left and right vertical edges are each labeled with a '2'. The plate is divided into four quadrants by a horizontal center line and a vertical center line. Dashed diagonal lines cross at the center. The word 'Eingröße' is written in the top-left quadrant, and a small circle is located in the top-right quadrant.

Technical drawing of a rectangular plate. The overall width is 100, and the overall height is 96. There are 2 units of material on the left and right sides. The plate has a central hole with a diameter of 10. The drawing shows the plate with dashed lines indicating the internal structure and the central hole.

Hinweis
Der Planung liegen folgende Daten / Unterlagen von xyz zu Grunde: -

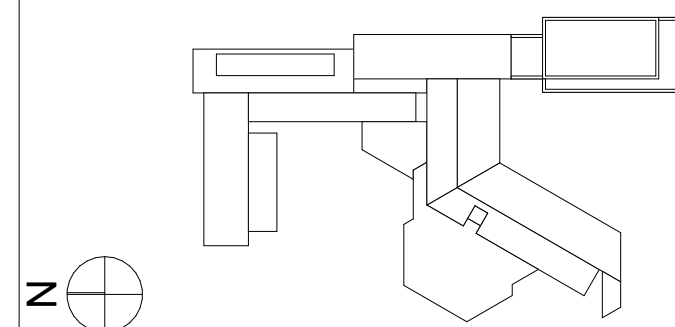
[illegible]

| INDEX | DATUM | GEZ. | BESCHREIBUNG |
|---|-------|------|--------------|
| <p>Alle Maße sind am Bau zu prüfen. Bestandsabhängige Toleranzen des Altbaus sind zu berücksichtigen. Für Maßfehler haftet allein der Auftragnehmer. Maßunstimmigkeiten sind sofort mit dem Architekten zu klären. Konstruktions- und fertigungstechnische Bedenken sind dem Architekten und der Bauleitung rechtzeitig mitzuteilen und zu begründen.</p> | | | |

| | |
|------------|--|
| PLANNUMMER | |
|------------|--|

| | | | | | | | |
|--------|----|---------|----------|----------------------|-------------|---------|--------------|
| A | 5 | - - | D E | 0 7 | - 2 0 | | F |
| PLANER | LP | BAUTEIL | GESCHOSS | PLANART / PLANINHALT | LFD. NUMMER | MASZTAB | INDEX STATUS |

LAGEPLAN



PROJEKT
Modernisierung und Erweiterung
Rathaus Ingelheim

Fridtjof-Nansen-Platz 1
55218 Ingelheim am Rhein

BAUHERR

Stadtverwaltung Ingelheim
Amt Bauen, Planen, Umwelt

Fridtjof-Nansen-Platz 1
55218 Ingelheim am Rhein
stadtverwaltung@ingelheim.de

PLANUNG
Just/
Architekten

Kaiserstraße 68
60329 Frankfurt am Main
+49 (0)69 900 160 200
mail@justarchitekten.de

PLANINHALT

Planunterlagen Vorzonen Module

| | | |
|----------------|--|--------------------------|
| Unterschrift: | | FREIGABE PLANUNG BAUHERR |
| LEISTUNGSPHASE | | STATUS |

| | | | | | | |
|----------|--------|-----------------|------|---------|---------------------|-----------------------|
| ERSTELLT | EXPORT | MASSTAB 1:20 | GEZ. | GEPRÜFT | PROJEKT NR. 2305 | BLATTFORMAT DIN A2 |
|----------|--------|-----------------|------|---------|---------------------|-----------------------|

Urheberrecht nach DIN 34 vorbehalten